

Swarclett Wind Farm



Figure 5-1-7
Blade and Hub ZTVs with
Landscape Character

Key

- Turbine Location
- 5 km turbine radii to 20 km
- Landscape Viewpoint
- NatureScot Landscape Character Type
- 134 - Sweeping Moorland and Flows
- 140 - Sandy Beaches and Dunes
- 141 - High Cliffs and Sheltered Bays
- 143 - Farmed Lowland Plain
- 144 - Coastal Crofts & Small Farms
- 295 - Holms
- 298 - Low Island Pastures
- 306 - Coastal Hills and Heath
- 312 - Plateau Heath and Pasture

Zone of Theoretical Visibility

- Turbines hub(s) visible (83.5m height)
- Turbines tip(s) visible only (149.9m height)

Generated using Ordnance Survey's Terrain50 dataset which does not take into account the screening effects of buildings or vegetation.

ZTV calculated using ArcGIS 10.6 Viewshed tool with observer eye height 2m above ground and corrections for earth curvature and atmospheric refraction applied.



0 2.5 5 10
Kilometres

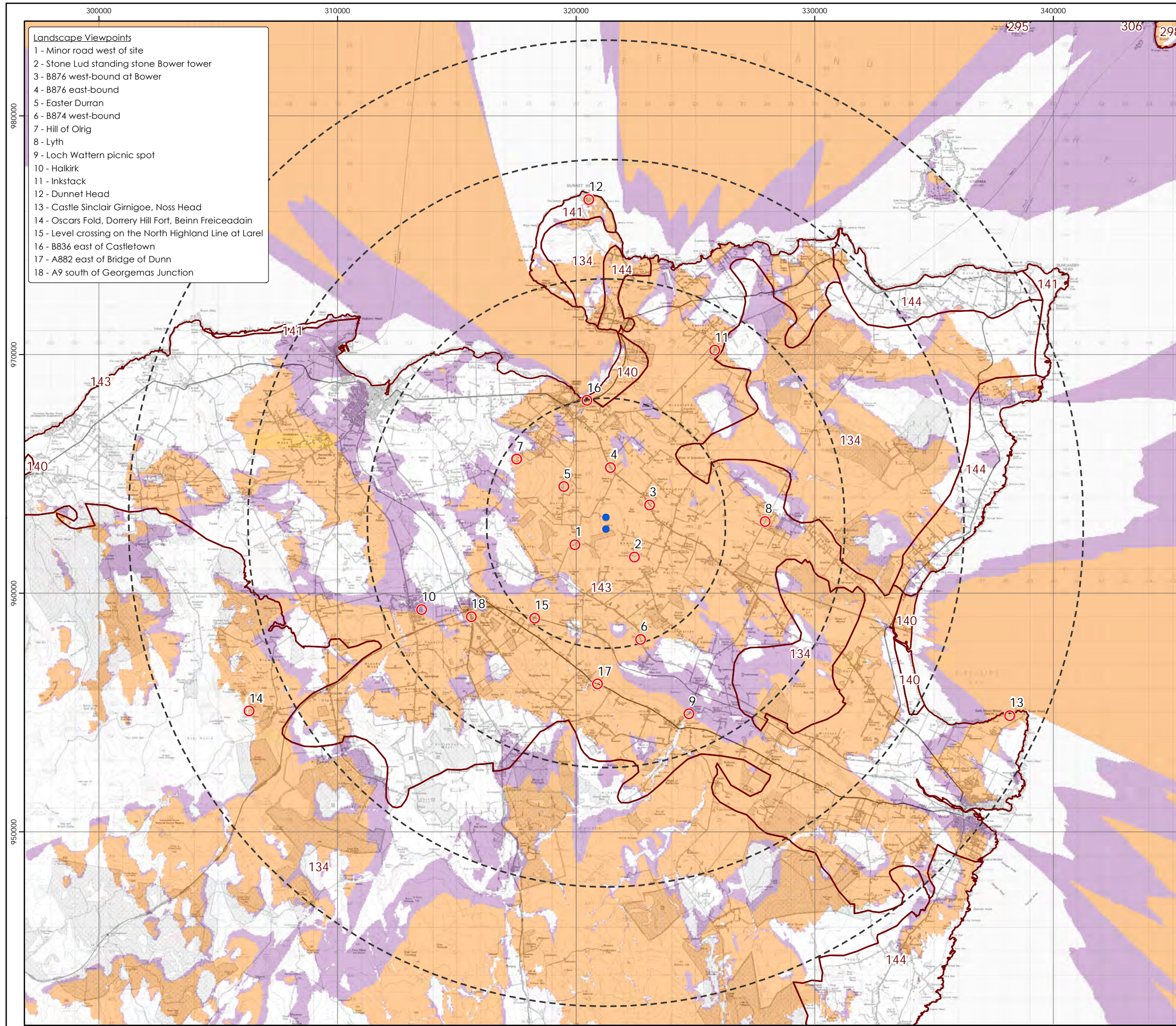


Scale @ A3:
1:150,000



© Crown copyright 2023. All rights reserved.
Ordnance survey licence number 100031673.

28/08/2023 TL01i 40422/ZV/070c
Drawn by: AF Checked by: TH Approved by: MT



- Landscape Viewpoints**
- 1 - Minor road west of site
 - 2 - Stone Lud standing stone Bower tower
 - 3 - B876 west-bound at Bower
 - 4 - B876 east-bound
 - 5 - Easter Durran
 - 6 - B874 west-bound
 - 7 - Hill of Orlig
 - 8 - Lyth
 - 9 - Loch Wattern picnic spot
 - 10 - Halkirk
 - 11 - Inkstack
 - 12 - Dunnet Head
 - 13 - Castle Sinclair Girmogoe, Noss Head
 - 14 - Oscars Fold, Dorrery Hill Fort, Beinn Freiceadain
 - 15 - Level crossing on the North Highland Line at Larel
 - 16 - B836 east of Castletown
 - 17 - A882 east of Bridge of Dunn
 - 18 - A9 south of Georgemas Junction